

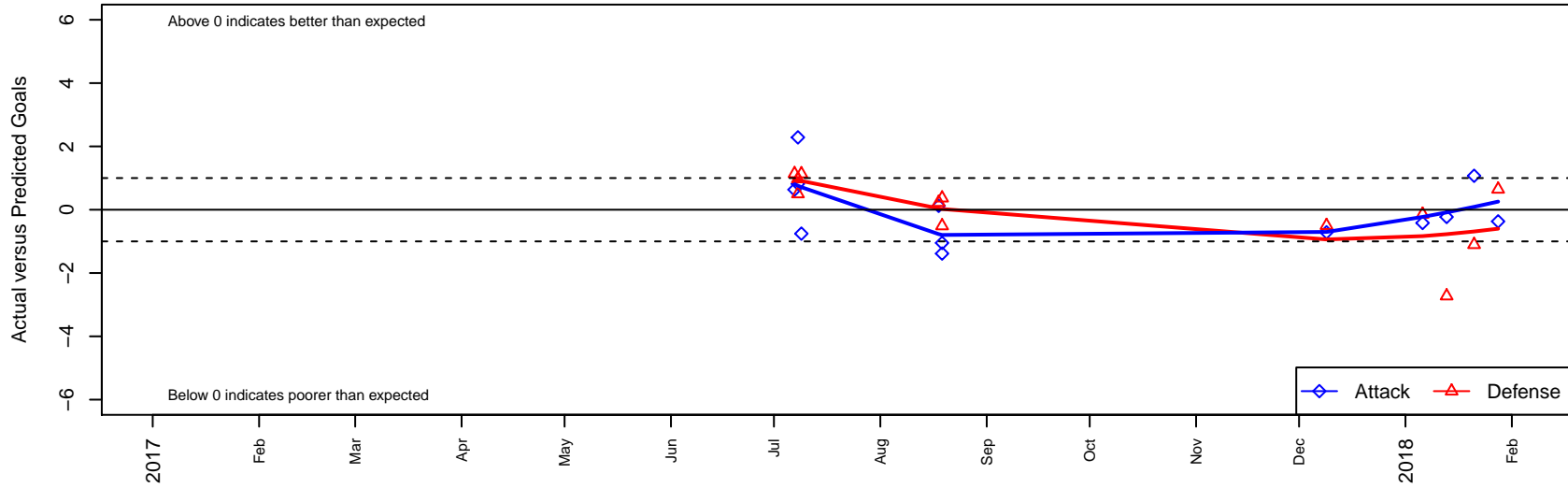
Mukilteo Rush G99

Mukilteo Rush
 Mukilteo, WA
 G99 total strength=1373
 attack=10.87 defense=4.9
 fall league = NPSL Div 2 (99) U19

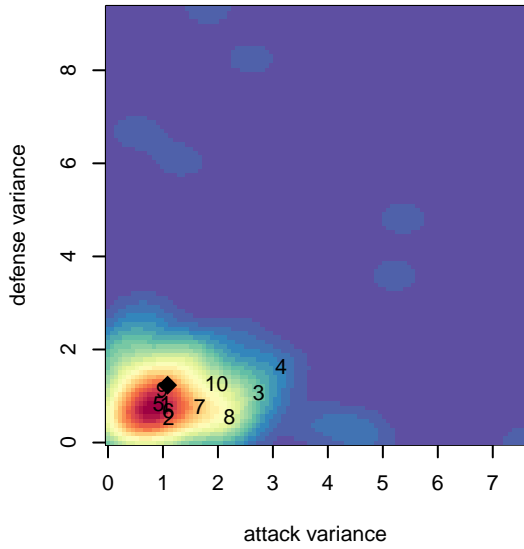
alt names used:
 Rush Select G99
 Rush Select G99
 Rush Select G99 A

Venues played:
 2017 Seattle Cup GU17-19 Silver
 2017 Xtreme Cup GU18-19
 2017 NPSL Division 2 (99) U19

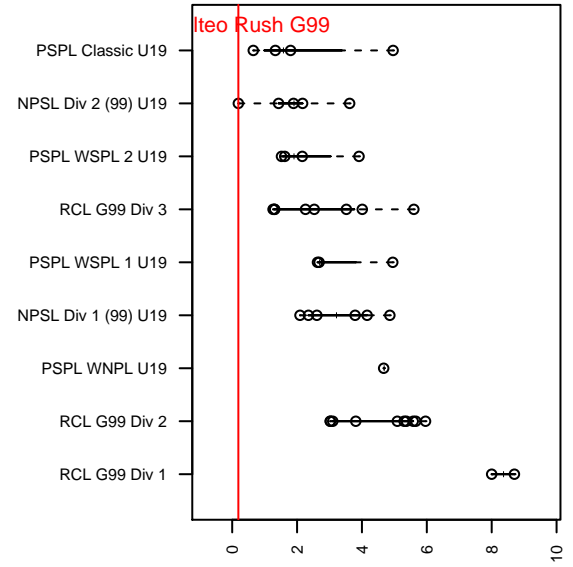
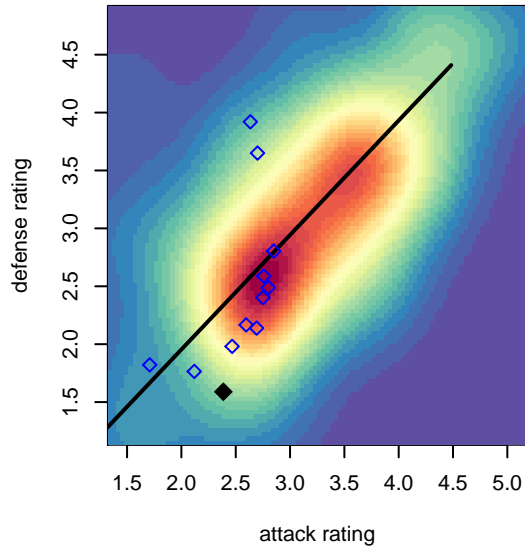
Mukilteo Rush G99
 Dots are actual minus expected GF (blue circles) and GA (red triangles).
 Blue line is smoothed change in attack strength. Red is smoothed change in defense strength.



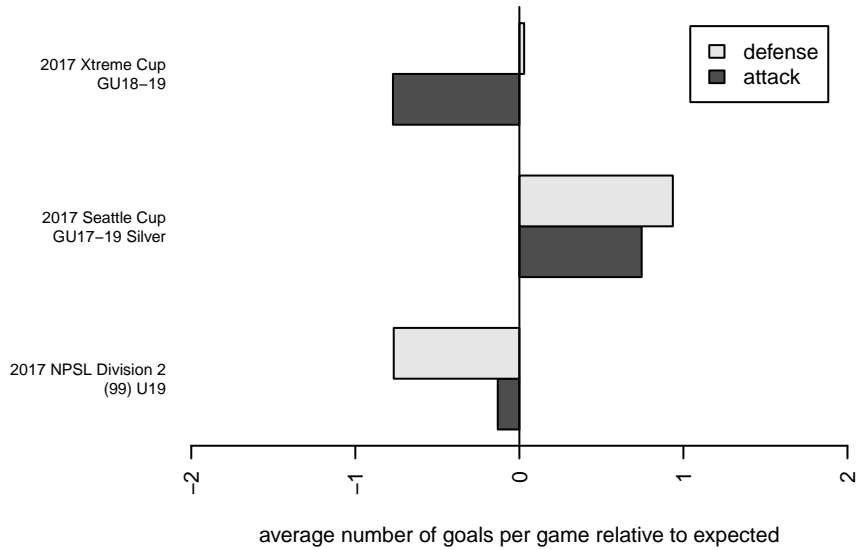
**attack and defense variance (black dot)
relative to other teams
and top 10 in region**



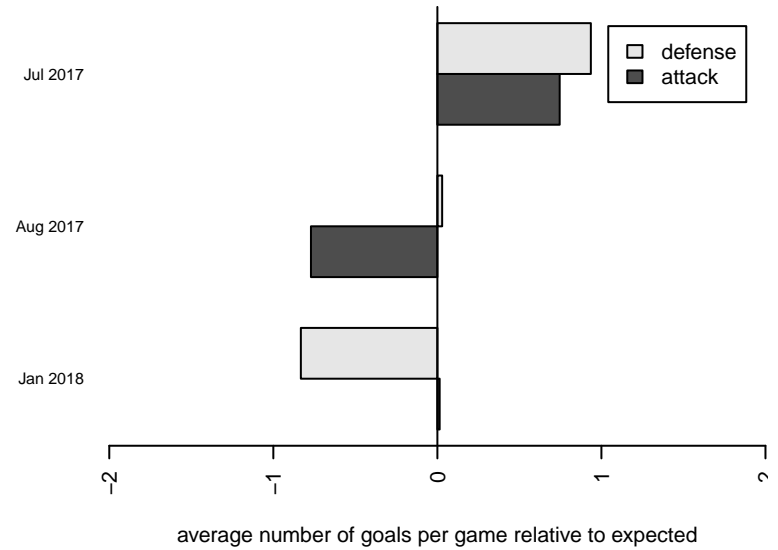
**attack and defense rating
relative to others at age
and all opponents in last 13 months**



Performance relative to 13 month average



Performance relative to 13 month average



date	home		away		venue	pred.home	pred.away
2018-01-28	Mukilteo Rush G99	0	Seattle United W Blue G99	2	2017 NPSL Division 2 (99) U19	0.37	2.65
2018-01-21	Peninsula Soccer Academy G99	4	Mukilteo Rush G99	2	2017 NPSL Division 2 (99) U19	2.90	0.93
2018-01-13	Seattle United Shoreline Blue G99	5	Mukilteo Rush G99	1	2017 NPSL Division 2 (99) U19	2.27	1.23
2018-01-06	Mukilteo Rush G99	1	FME Fusion G99	3	2017 NPSL Division 2 (99) U19	1.42	2.86
2017-12-09	Mukilteo Rush G99	1	Crossfire Select Toon G00	2	2017 NPSL Division 2 (99) U19	1.71	1.50
2017-08-19	Mukilteo Rush G99	0	NSC Edge G00	3	2017 Xtreme Cup GU18-19	1.38	2.49
2017-08-19	Highline Premier Blue G99	2	Mukilteo Rush G99	0	2017 Xtreme Cup GU18-19	2.37	1.05
2017-08-18	Mukilteo Rush G99	1	Lake Hills Infinity G99	3	2017 Xtreme Cup GU18-19	0.88	3.23
2017-07-09	Newport FC G99	2	Mukilteo Rush G99	0	2017 Seattle Cup GU17-19 Silver	3.13	0.76
2017-07-08	Crossfire Select Toon G00	1	Mukilteo Rush G99	4	2017 Seattle Cup GU17-19 Silver	1.50	1.71
2017-07-08	RSA Elite G00	0	Mukilteo Rush G99	3	2017 Seattle Cup GU17-19 Silver	0.97	2.18
2017-07-07	Mukilteo Rush G99	1	West Narrows FC Blue G99	1	2017 Seattle Cup GU17-19 Silver	0.37	2.14